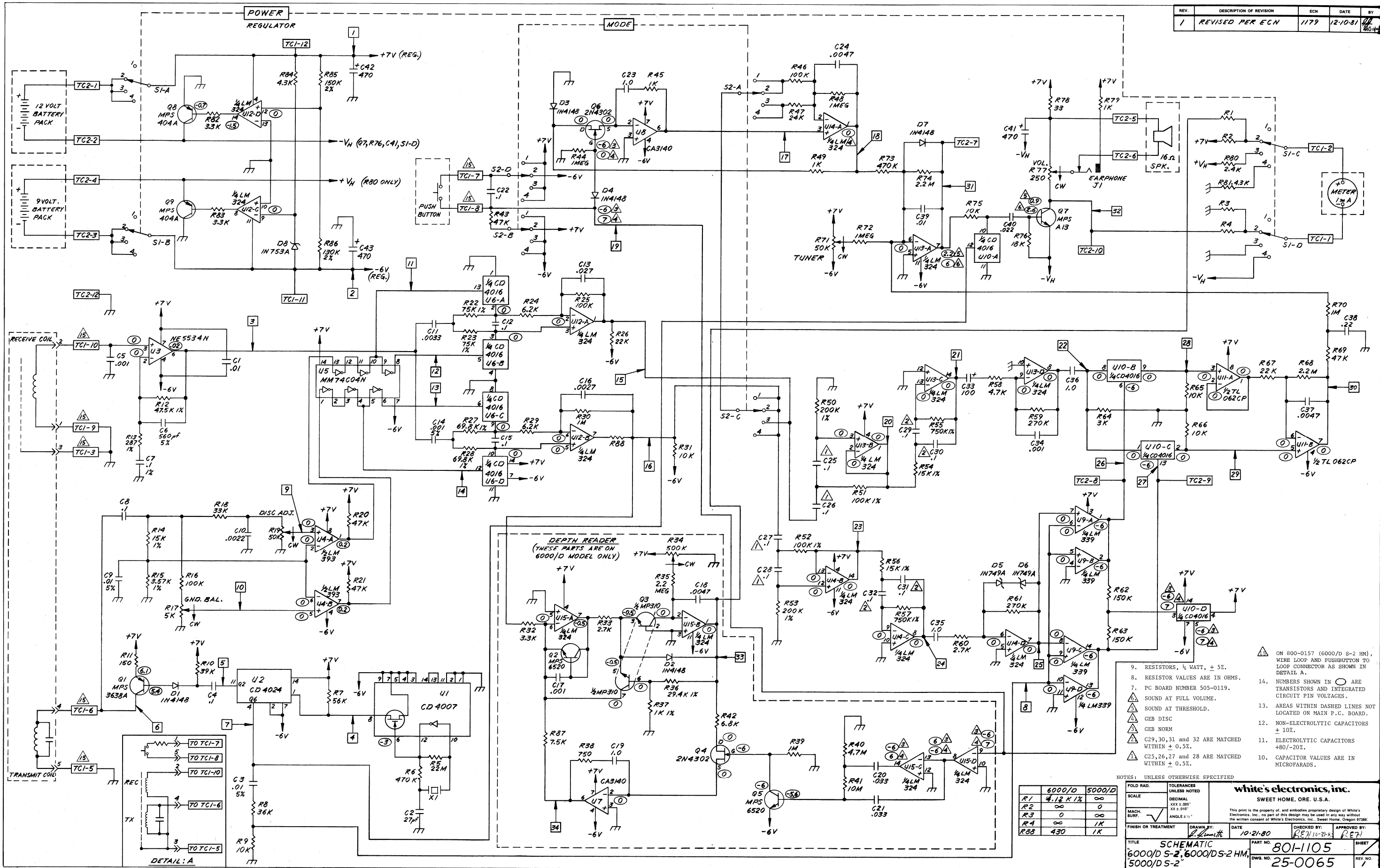


REV.	DESCRIPTION OF REVISION	ECN	DATE	BY
1	REVISED PER ECN	1179	12-10-81	11/1



- ON 800-0157 (6000/D S-2 HM), WIRE LOOP AND PUSHBUTTON TO LOOP CONNECTOR AS SHOWN IN DETAIL A.
- RESISTORS, 1/2 WATT, ± 5%.
  - RESISTOR VALUES ARE IN OHMS.
  - PC BOARD NUMBER 505-0119.
  - SOUND AT FULL VOLUME.
  - SOUND AT THRESHOLD.
  - GEB DISC
  - GEB NORM
  - C29, 30, 31 and 32 ARE MATCHED WITHIN ± 0.5%.
  - C25, 26, 27 and 28 ARE MATCHED WITHIN ± 0.5%.
  - NON-ELECTROLYTIC CAPACITORS ± 10%.
  - ELECTROLYTIC CAPACITORS +80/-20%.
  - CAPACITOR VALUES ARE IN MICROFARADS.
  - AREAS WITHIN DASHED LINES NOT LOCATED ON MAIN P.C. BOARD.
  - NUMBERS SHOWN IN CIRCLES ARE TRANSISTORS AND INTEGRATED CIRCUIT PIN VOLTAGES.

NOTES: UNLESS OTHERWISE SPECIFIED

FOLD RAD.		TOLERANCES UNLESS NOTED		white's electronics, inc.	
SCALE		DECIMAL		SWEET HOME, ORE. U.S.A.	
MACH. SURF.		XX ± .005"		This print is the property of, and embodies proprietary design of White's Electronics, Inc. no part of this design may be used in any way without the written consent of White's Electronics, Inc., Sweet Home, Oregon 97386.	
FINISH OR TREATMENT		DRAWN BY: <i>R. Smith</i>		DATE: 10-21-80	CHECKED BY: <i>REH</i>
TITLE: SCHEMATIC		PART NO. 801-1105		APPROVED BY: <i>REH</i>	SHEET 1
6000/D S-2, 6000/DS-2 HM, 5000/DS-2		DWG. NO. 25-0065		REV. NO. 1	

25-0065

WAVEFORMS ON DWG 20-0124